

# Plug In, Clean Your Power and Save

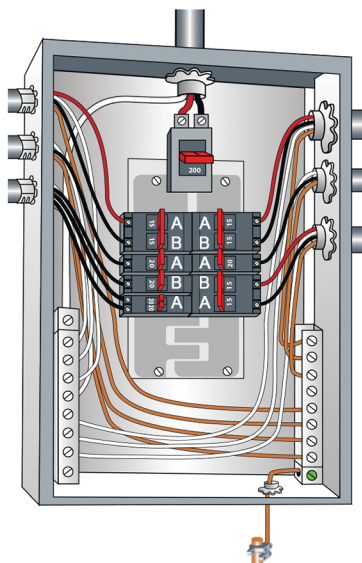


## Technical Specifications

Rated Voltage: 90V~132V Rated Frequency: 50Hz~60Hz Max: 15 Amp | 1800W

## EASY INSTALLATION

Utilities deliver residential homes with single-phase electric power split into two phases of 120V electricity labeled as A & B. These phases feed multiple breakers that follow a cascading pattern of A, B, A, B in the distribution panel (see illustration to the right). Each breaker should be labeled for the specific room or appliance it services so that you can easily identify each individual circuit. For whole home filtration, follow the cascading pattern and identify one circuit on each of the two phases. Select one circuit on Phase A and one circuit on Phase B to plug in the units. For maximum benefit, identify the circuit on each phase with the highest level of EMF or inductive loads (motors & appliances) or electronics; such as the kitchen, home office or entertainment areas.



**\*\*Warning\*\*** Do NOT plug anything that exceeds 15 amps directly into the Pure Power Plug-In's outlet. Doing so will void the warranty.